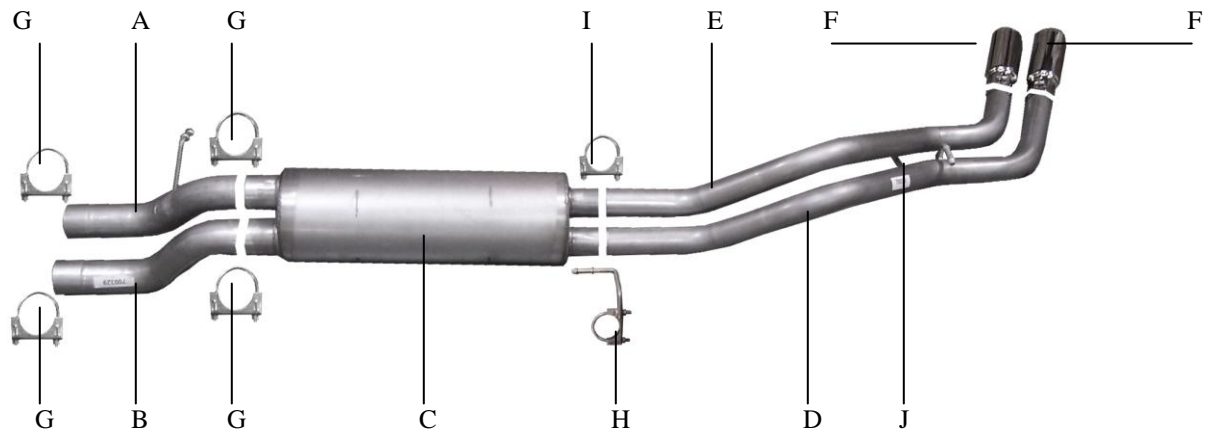




INSTRUCTION MANUAL
CAT BACK STAINLESS DUAL SPORT EXHAUST
SILVERADO /SIERRA TRUCK 2500HD 3500HD
8.1L-V8 2/4WD
CREW CAB, LONG BED

PART # 65206



ITEM	PART #	QUANTITY	DESCRIPTION
A	497-700343S	1	3" PSGR. STAINLESS HEADPIPE W/WELDED HANGER
B	494-700329S	1	3" DRIVER STAINLESS HEADPIPE
C	766300S	1	SUPERFLOW STAINLESS MUFFLER
D	495-700330S	1	2-1/2" DRIVERSIDE SS TAILPIPE W/HANGER
E	496-700331S	1	2-1/2" PASSENGER SS TAILPIPE
F	500374	2	3 1/2" STAINLESS TIPS
G	OHD300	4	3" CLAMPS
H	4164	1	2-1/2" HANGER FOR MUFFLER D/S
I	5757	1	2-1/2" CLAMP
J	BO-906	1	BOLT KIT FOR TAILPIPE

THANK YOU FOR CHOOSING OUR GIBSON PERFORMANCE EXHAUST FOR YOUR VEHICLE.
 IF YOU NEED FURTHER ASSISTANCE, PLEASE DO NOT HESITATE TO CALL OUR
 TECHNICAL DEPARTMENT AT (800) 528-3044, MONDAY THROUGH FRIDAY,
 8:00 AM TO 5:00 PM.

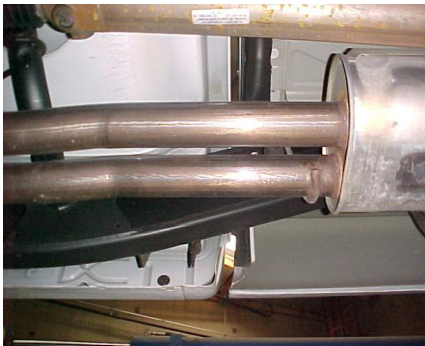
EXHAUST INSTALLATION #65206

WHEN INSTALLING THIS EXHAUST SYSTEM MAKE SURE TO USE PROPER SAFETY PRECAUTIONS. USE JACK STANDS WHEN UNDER THE TRUCK, SET PARKING BRAKE, BLOCK TIRES AND USE SAFETY GLASSES AND GLOVES.
DO NOT WORK WITH HOT PIPES!!!

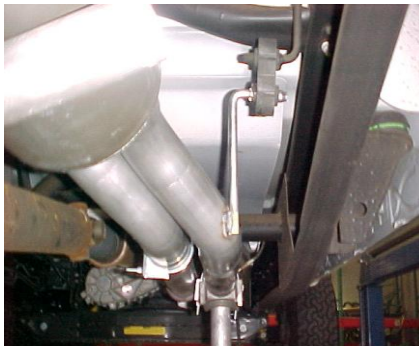
SUGGESTED TOOLS

15MM SOCKET & WRENCH, 9/16", 7/16", 1/2" SOCKET & WRENCH, JACK STANDS, WD-40, HACKSAW

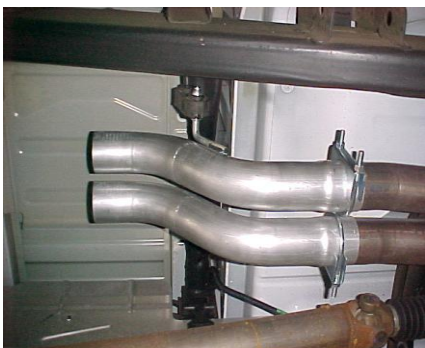
LAY OUT THE EXHAUST AND COMPARE PART NUMBERS WITH THE DRAWING



TO REMOVE STOCK EXHAUST, CUT 13" FROM THE FRONT OF THE MUFFLER, MEASURE TOWARDS THE FRONT OF THE VEHICLE. LEAVE ALL RUBBER GROMMETS ON THE HANGER. USE WD-40 TO AID IN THE REMOVAL OF EXHAUST AND HANGERS



SLIDE DRIVERS SIDE TAILPIPE #D INTO MUFFLER 1-1/2" TO 2". INSERT WELDED HANGER INTO RUBBER GROMMET AND ATTACH TO MUFFLER USING CLAMP #H. THE PASSENGER SIDE TAILPIPE WILL BE ON THE BOTTOM.



SLIDE PASSENGER SIDE HEADPIPE #A ONTO STOCK HEADPIPE. INSERT WELDED HANGER INTO RUBBER GROMMET. NEXT INSTALL DRIVERS SIDE HEADPIPE #B ONTO STOCK HEADPIPE, USE CLAMP #G TO SECURE HEADPIPES, DO NOT TIGHTEN.

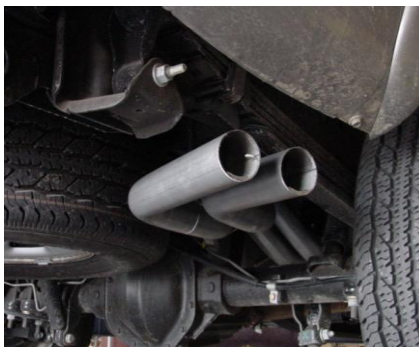


SLIDE MUFFLER #C ONTO HEADPIPES 1-1/2" TO 2". OUTLETS SHOULD BE AT THE BOTTOM, USE A JACK STAND TO SUPPORT MUFFLER AND CONNECT WITH CLAMPS #G. INSTALL CLAMP #H INTO RUBBER GROMMET JUST ABOVE DRIVERS SIDE OF MUFFLER OUTLET. YOU WILL USE THIS CLAMP TO SECURE TAILPIPE TO MUFFLER.

ATTACH BOTH TAILPIPES TOGETHER WITH BOLT KIT #J.



SLIDE PASSENGER SIDE TAILPIPE #E INTO OUTLET OF MUFFLER 1-1/2" TO 2". USE CLAMP #I TO SECURE TAILPIPE TO MUFFLER. DO NOT TIGHTEN.



INSTALL YOUR STAINLESS STEEL TIPS. TO CLEAN TIPS USE A SCOTCH BRITE PAD AND ANY STAINLESS OR ALUMINUM CLEANER. AFTER YOU HAVE CHECKED FOR CLEARANCES GO BACK AND TIGHTEN ALL NUTS, BOLTS AND CLAMPS.



"MAKE SURE YOU HAVE A MINIMUM OF 1" CLEARANCE ON ALL PIPES FROM BRAKE AND FUEL LINES, TIRES, SHOCKS, ETC..."